

GADSDEN
MALL



RETAIL SPACE FOR LEASE

Gadsden Mall, the only mall within a 40-mile radius, offers exceptional accessibility via US Route 411 and I-759, making it the go-to shopping destination for customers from all directions.

SUMMIT
PROPERTIES USA



SITE OVERVIEW

Site Acres:	45.7 acres
Total Leasable Area:	489,559 sqf
Owned Leasable Area:	454,559 sqf
Parking Places:	2,364 autos
Anchor Tenants:	belk Martin's Premiere Cinemas The Alley

PROPERTY OVERVIEW

Popular Retailers: Gadsden Mall is home to national brands like American Eagle, Claire's, and Rue 21, drawing steady foot traffic from the surrounding area with its diverse retail offerings.

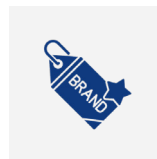
Entertainment Appeal: The Alley leads a lineup of attractions that includes Black Light Mini Golf and Planet Fitness, bringing people to the mall on a daily basis. Gadsden Mall is a family-friendly destination that offers more than just shopping.

Strategic Location: Positioned at the intersection of US Route 411 and I-759, the mall is easily accessible, attracting visitors from across the region.

Community Hub: Gadsden Mall strengthens its connection with local shoppers through regular events and activities, fostering engagement and keeping foot traffic high.



**STRATEGIC
LOCATION**



**NATIONAL
TENANTS**



**ENTERTAINMENT
& FITNESS**



**CONVENIENT
PARKING**



**COMMUNITY
ENGAGEMENT**

ShopGadsdenMall

GADSDEN MALL

RETAIL SPACE FOR LEASE

1001 Rainbow Dr
Gadsden AL 35901
📍 ShopGadsdenMall

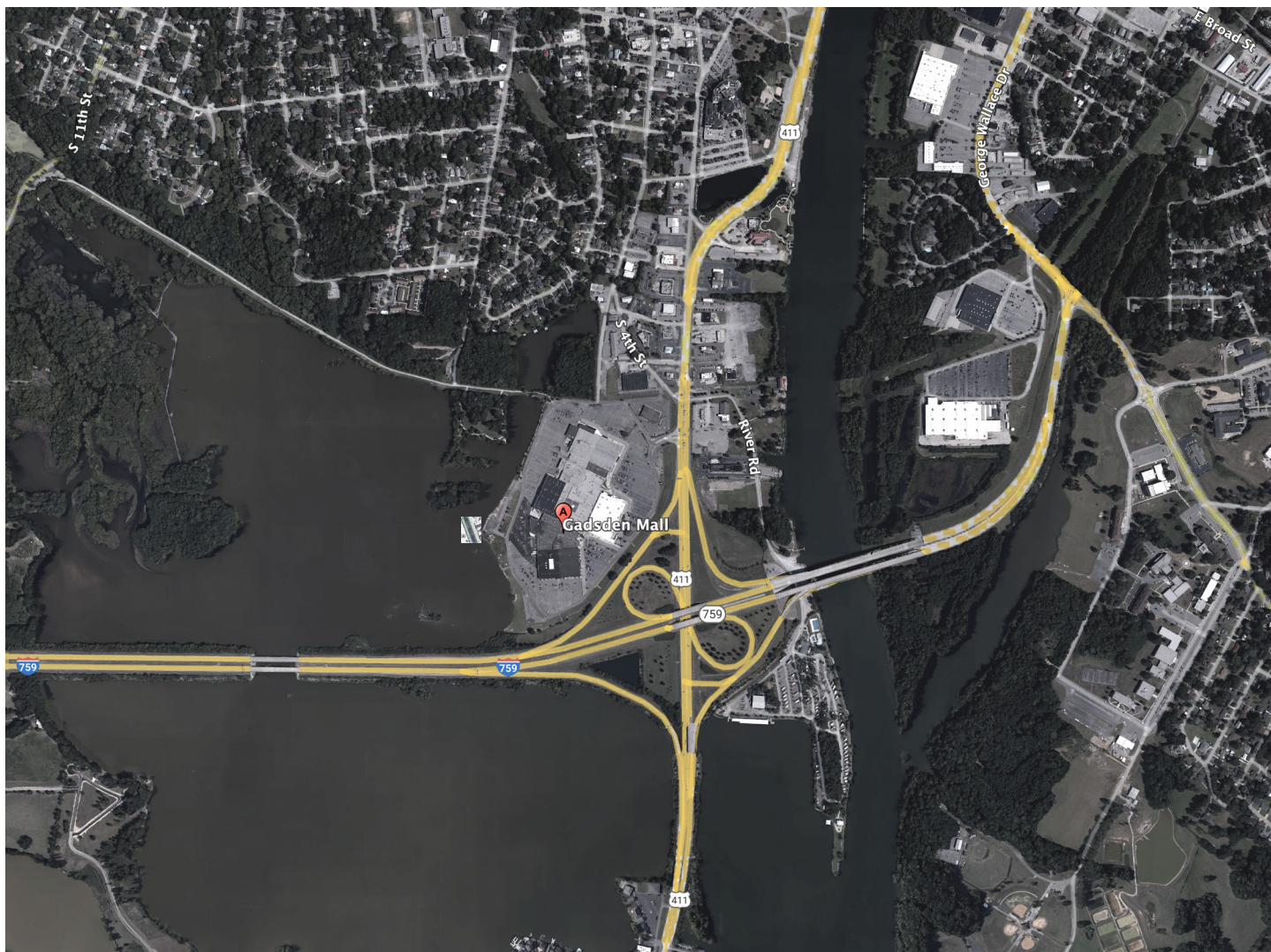
DEMOGRAPHICS

5 MILE

10 MILE

20 MILE

Population	48,321	84,403	178,107
Households	18,539	31,838	65,830
Avg. Household Income	\$61,928	\$70,602	\$69,089
Median Age	40	42	40



SUMMIT
PROPERTIES USA

Leasing Manager

Sean Byrne



(215) 287-6150



sbyrne@summit-us.com



www.shopgadsdenmall.com

GADSDEN MALL

RETAIL SPACE FOR LEASE

1001 Rainbow Dr

Gadsden AL 35901

📍 ShopGadsdenMall



SUMMIT
PROPERTIES USA

Leasing Manager

Sean Byrne

(215) 287-6150



sbyrne@summit-us.com

www.shopgadsdenmall.com

GADSDEN MALL

RETAIL SPACE FOR LEASE

1001 Rainbow Dr

Gadsden AL 35901

📍 ShopGadsdenMall



SUMMIT
PROPERTIES USA

Leasing Manager

Sean Byrne



(215) 287-6150



sbyrne@summit-us.com



www.shopgadsdenmall.com

GADSDEN MALL

RETAIL SPACE FOR LEASE

1001 Rainbow Dr

Gadsden AL 35901

 ShopGadsdenMall

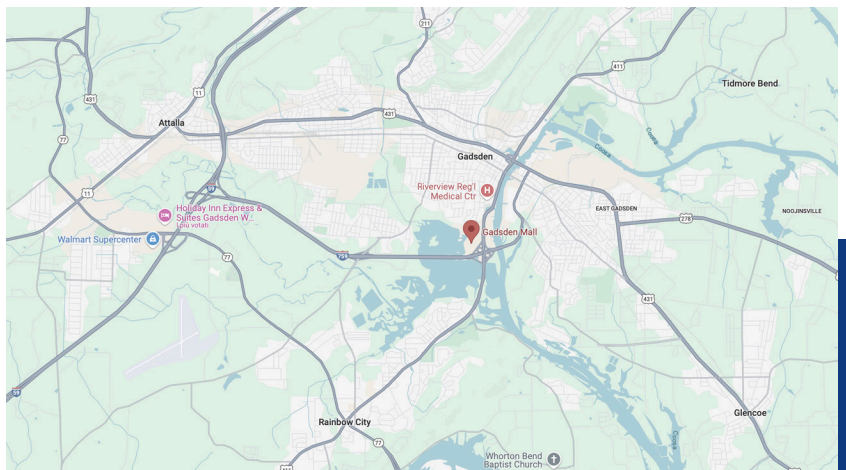
GADSDEN

Gadsden, nestled along the scenic Coosa River in northeastern Alabama, is a vibrant city celebrated for its rich industrial heritage, natural beauty, and strong community ties. The city serves as a regional hub for shopping, dining, and outdoor recreation. Esteemed institutions such as Gadsden State Community College and Riverview Regional Medical Center contribute to a diverse and dynamic populace. Strategically located near US Route 411 and I-759, Gadsden Mall offers excellent accessibility for both local residents and visitors. The city's steady economic growth and family-friendly atmosphere make it an ideal location for retail businesses.



AREA

City	38.3 sq mi
Land	37.2 sq mi
Water	1.1 sq mi
Elevation	554 ft



SUMMIT
PROPERTIES USA

Leasing Manager

Sean Byrne

(215) 287-6150



sbyrne@summit-us.com

www.shopgadsdenmall.com